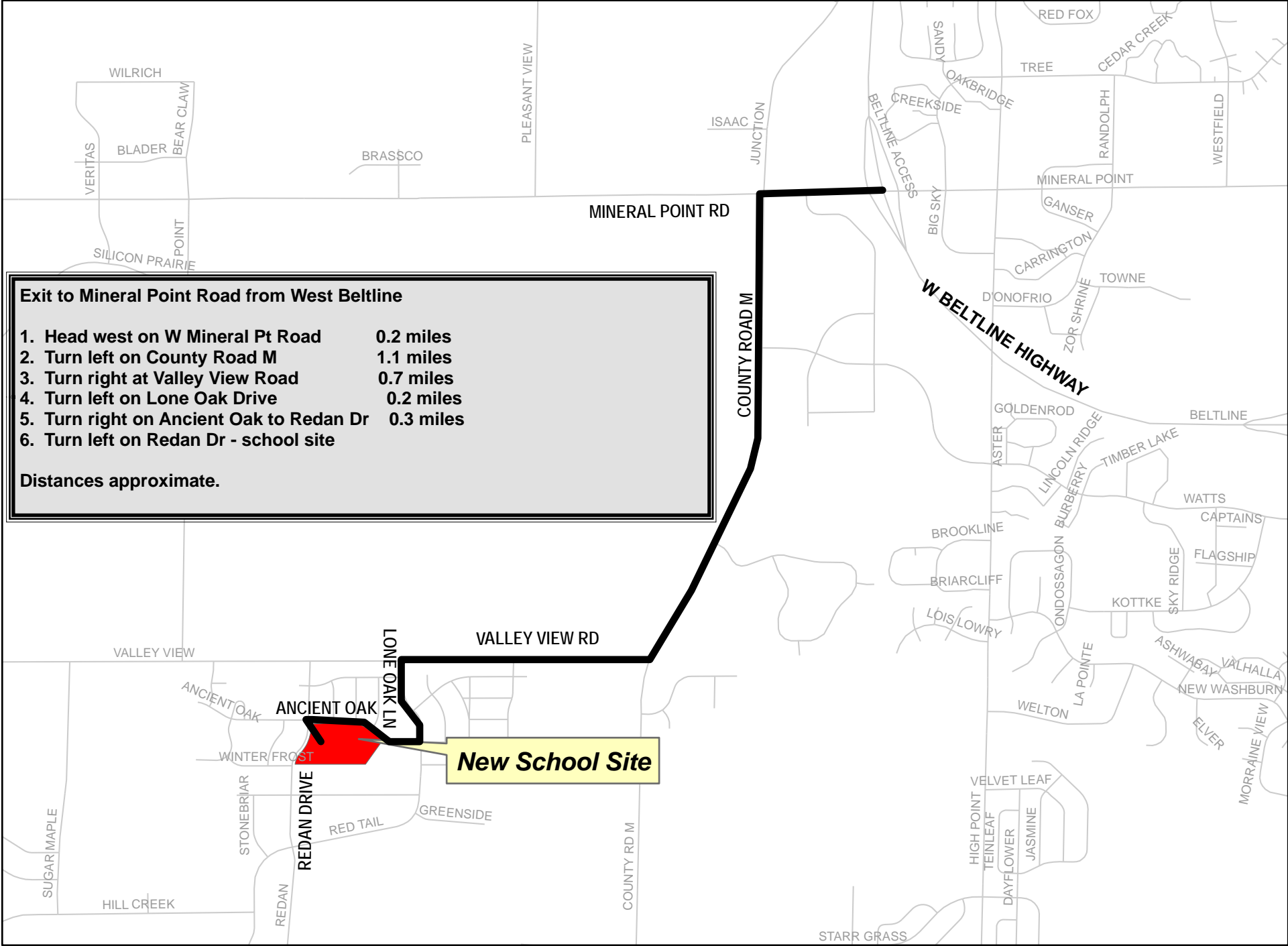


Directions to New School Site from Mineral Point Exit off West Beltline



- Exit to Mineral Point Road from West Beltline**
1. Head west on W Mineral Pt Road 0.2 miles
 2. Turn left on County Road M 1.1 miles
 3. Turn right at Valley View Road 0.7 miles
 4. Turn left on Lone Oak Drive 0.2 miles
 5. Turn right on Ancient Oak to Redan Dr 0.3 miles
 6. Turn left on Redan Dr - school site
- Distances approximate.